

## Chemical Logistics – Reach chemical industry professionals interested in logistics



- Reach an audience formed of Purchasing & Logistics Managers, Chemical Producers, Chemical Distributors, Legislative & Environmental Experts and IT & E-commerce Experts.
- Deliver your marketing message directly to the inboxes of your target audience

### Description

**Active circulation:** 2,957 (Publishers Statement Q2 2010)

**Frequency:** Monthly

**Content:** Chemical Logistics e-newsletter covers the main issues, news and latest developments of this niche sector including supply chain disruptions, people movements and financial stories.

### Advertising opportunities

| Ad unit           | Size (px)          | Price for single e-newsletter \$ |
|-------------------|--------------------|----------------------------------|
| Top Banner        | 468 x 60           | 995                              |
| Skyscraper        | 120 x 600          | 995                              |
| Advertorial       | 50 words + heading | 995                              |
| Mid banner        | 468 x 60           | 995                              |
| Mid MPU           | 300 x 250          | 995                              |
| Supplier News     | 8 word link        | 300                              |
| Solus Sponsorship | As above           | 2,400                            |

Note: Price for a single e-newsletter as at July 2009. Subject to change depending on circulation of e-newsletter. Minimum rate of \$995 applies to this e-newsletter.

### Advertising delivery requirements

Advertisements and/or copy must be submitted to [e-marketing.operations@rbi.co.uk](mailto:e-marketing.operations@rbi.co.uk) at least five (5) business days before scheduled sponsorship. GIF, animated GIF and JPEG images are accepted. Rich media files are not accepted. File size should not exceed 30k. All advertisements should be accompanied by a text equivalent in order to be seen by all subscribers (200 characters).

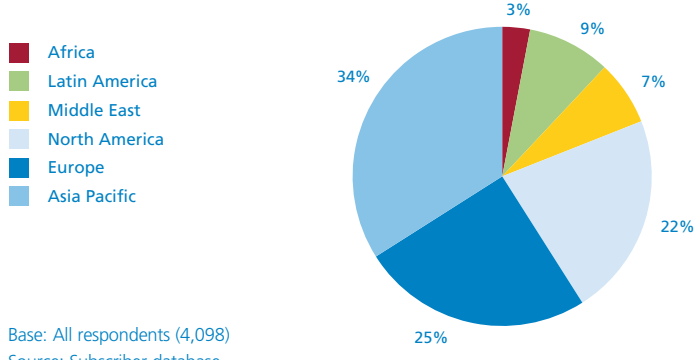
**Either the mid MPU or mid banner will feature in the newsletter (see left)**

All advertisements are accepted subject to RBI's standard terms and conditions which can be found at [www.reedbusiness.co.uk/adtermsandconditions](http://www.reedbusiness.co.uk/adtermsandconditions)



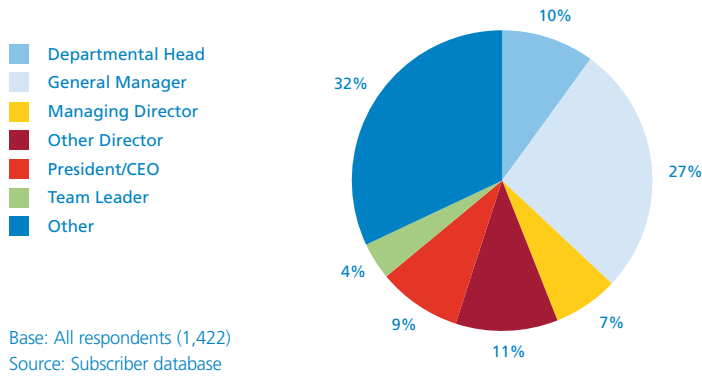
# Chemical Logistics – Reach chemical industry professionals interested in logistics

## World Region



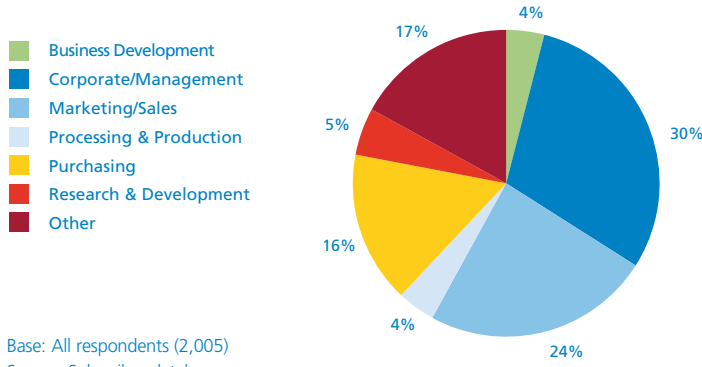
Base: All respondents (4,098)  
Source: Subscriber database

## Job Status



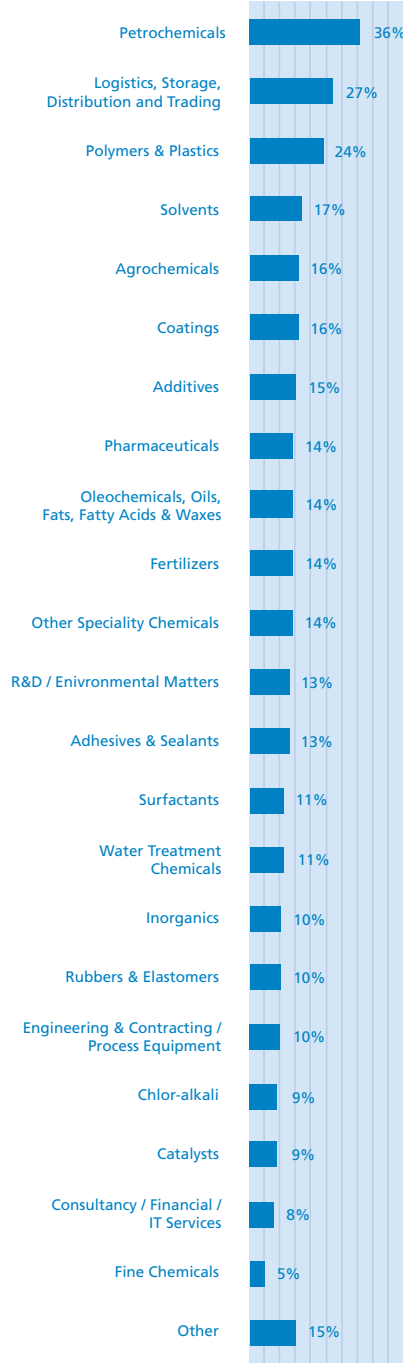
Base: All respondents (1,422)  
Source: Subscriber database

## Job Function



Base: All respondents (2,005)  
Source: Subscriber database

## Activity Area



Base: All respondents (3,221)  
Source: Subscriber database

Information about your nearest sales contact can be found at [www.icis.com/advertise-contacts](http://www.icis.com/advertise-contacts)